

Courtesy Of Pei Sun Of MaxWell Polaris

## \$299,900 - 306 9020 Jasper Avenue, Edmonton

MLS® #E4368527

**\$299,900**

1 Bedroom, 2.00 Bathroom, 1,149 sqft  
Condo / Townhouse on 0.00 Acres

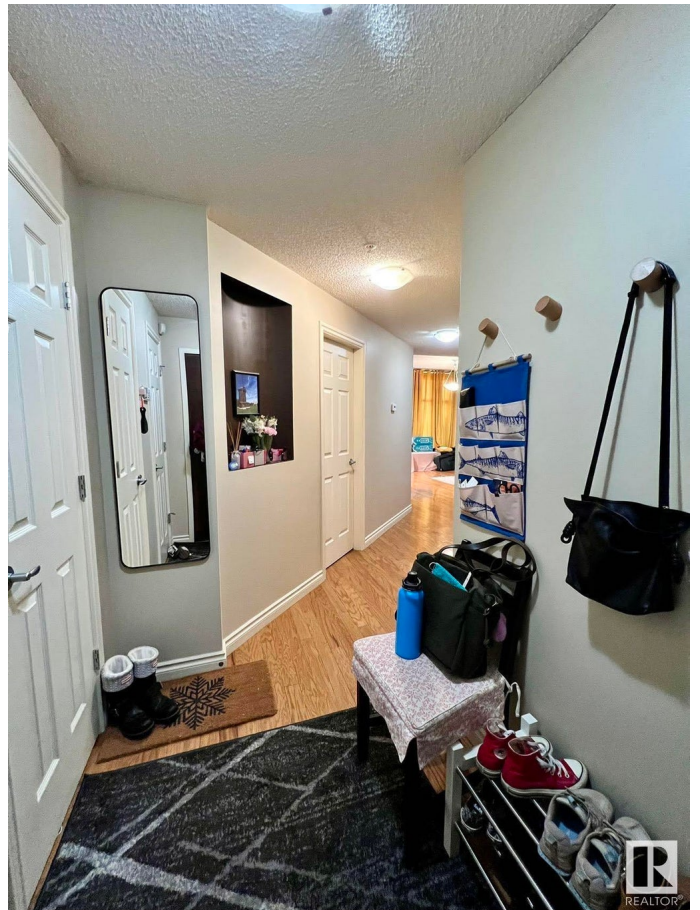
Boyle Street, Edmonton, AB

Welcome to a luxurious living experience in this bright, elegant, and incredibly spacious condo. Boasting over 1100 square feet, this condominium is the epitome of sophistication. As you step in, you'll be captivated by the five deluxe appliances and the stunning cabinetry. The kitchen features granite countertops and travertine tile. The gas fireplace in the great room adds a touch of opulence and warmth to the living area. Open concept living room is filled with natural light. Step out onto the expansive balcony and imagine enjoying the tranquil evenings and entertaining friends against this serene backdrop. The master bedroom is a true sanctuary, featuring a spacious walk-in closet and a luxurious ensuite, making it the ideal retreat after a long day. The large den can easily double as an extra bedroom for guests. Another full bathroom provides flexibility and convenience. Indoor/heated parking is also included. Don't wait, come and call this your home.

Built in 2005

### Essential Information

MLS® #	E4368527
Price	\$299,900
Bedrooms	1
Bathrooms	2.00



Full Baths	2
Square Footage	1,149
Acres	0.00
Year Built	2005
Type	Condo / Townhouse
Sub-Type	Apartment High Rise
Style	Single Level Apartment
Status	Active

### **Community Information**

Address	306 9020 Jasper Avenue
Area	Edmonton
Subdivision	Boyle Street
City	Edmonton
County	ALBERTA
Province	AB
Postal Code	T5H 3S8

### **Amenities**

Amenities	Carbon Monoxide Detectors
Parking	Heated, Parkade

### **Interior**

Interior Features	ensuite bathroom
Appliances	Dryer, Microwave Hood Fan, Refrigerator, Stove-Electric, Washer
Heating	Forced Air-1, Natural Gas
# of Stories	22
Stories	1
Has Basement	Yes
Basement	None, No Basement

### **Exterior**

Exterior	Concrete, Brick
Exterior Features	Landscaped, Level Land
Roof	Tar & Gravel
Construction	Concrete, Brick
Foundation	Concrete Perimeter

### **Additional Information**

Date Listed December 28th, 2023  
Days on Market 464  
Zoning Zone 13  
Condo Fee \$766



DATA IS DEEMED RELIABLE BUT IS NOT GUARANTEED ACCURATE BY THE REALTORS® ASSOCIATION OF EDMONTON. COPYRIGHT 2025 BY THE REALTORS® ASSOCIATION OF EDMONTON. ALL RIGHTS RESERVED. Trademarks are owned or controlled by the Canadian Real Estate Association (CREA) and identify real estate professionals who are members of CREA (REALTOR®, REALTORS®) and/or the quality of services they provide (MLS®, Multiple Listing Service®)

Listing information last updated on April 5th, 2025 at 5:02am MDT