

\$255,000 - 223 524 Griesbach Parade, Edmonton

MLS® #E4412056

\$255,000

1 Bedroom, 1.00 Bathroom, 713 sqft
Condo / Townhouse on 0.00 Acres

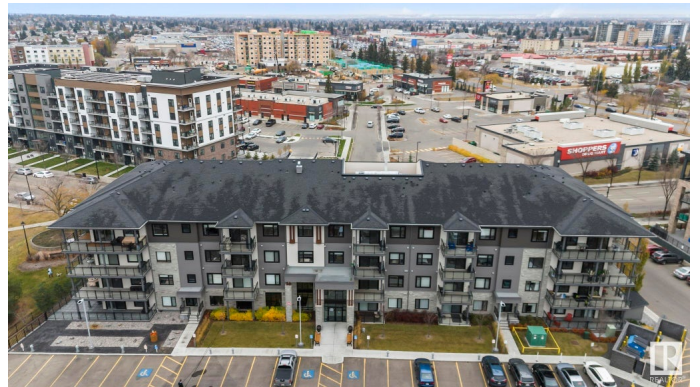
Griesbach, Edmonton, AB

Welcome to Veritas in Griesbach, Edmontonâ€™s premier condo building in a community known for charm, elegance, and convenience. This rare 1-bedroom, 1-bathroom unit is not only a great opportunity but also one of the most cost-effective properties in the Veritas building, offering affordable luxury with 713 SF of living space. High-end features include 9-foot ceilings, quartz countertops, luxury vinyl plank flooring, and stainless steel appliances, ensuring style and functionality. The unit comes with in-suite laundry and access to fantastic building amenities like a gym, social room, and guest suite. Nestled near scenic lakes, walking trails, and Griesbachâ€™s 24-acre park, Veritas combines a peaceful setting with proximity to shops and dining. Perfect for retirees, young professionals, or investors, this unit offers upscale living in a sought-after neighborhood at a price point thatâ€™s hard to beat. Donâ€™t miss this chance to own in one of Edmontonâ€™s most prestigious communities at an unbeatable value!

Built in 2018

Essential Information

MLS® #	E4412056
Price	\$255,000



Bedrooms	1
Bathrooms	1.00
Full Baths	1
Square Footage	713
Acres	0.00
Year Built	2018
Type	Condo / Townhouse
Sub-Type	Lowrise Apartment
Style	Multi Level Apartment
Status	Active

Community Information

Address	223 524 Griesbach Parade
Area	Edmonton
Subdivision	Griesbach
City	Edmonton
County	ALBERTA
Province	AB
Postal Code	T5E 6X2

Amenities

Amenities	Ceiling 9 ft., Closet Organizers, Exercise Room, No Animal Home, No Smoking Home, Parking-Visitor, Social Rooms
Parking	Parkade

Interior

Appliances	Dishwasher-Built-In, Dryer, Refrigerator, Stove-Countertop Electric, Washer, Window Coverings
Heating	Forced Air-1, Natural Gas
# of Stories	4
Stories	4
Has Basement	Yes
Basement	None, No Basement

Exterior

Exterior	Wood, Stone, Vinyl
Exterior Features	Flat Site, Landscaped, Playground Nearby, Public Transportation, Shopping Nearby
Roof	Asphalt Shingles

Construction Wood, Stone, Vinyl
Foundation Concrete Perimeter

Additional Information

Date Listed October 30th, 2024

Days on Market 157

Zoning Zone 27

Condo Fee \$378

DATA IS DEEMED RELIABLE BUT IS NOT GUARANTEED ACCURATE BY THE REALTORS® ASSOCIATION OF EDMONTON. COPYRIGHT 2025 BY THE REALTORS® ASSOCIATION OF EDMONTON. ALL RIGHTS RESERVED. Trademarks are owned or controlled by the Canadian Real Estate Association (CREA) and identify real estate professionals who are members of CREA (REALTOR®, REALTORS®) and/or the quality of services they provide (MLS®, Multiple Listing Service®)

Listing information last updated on April 5th, 2025 at 5:17am MDT