

# \$825,000 - 8323 Saskatchewan Drive, Edmonton

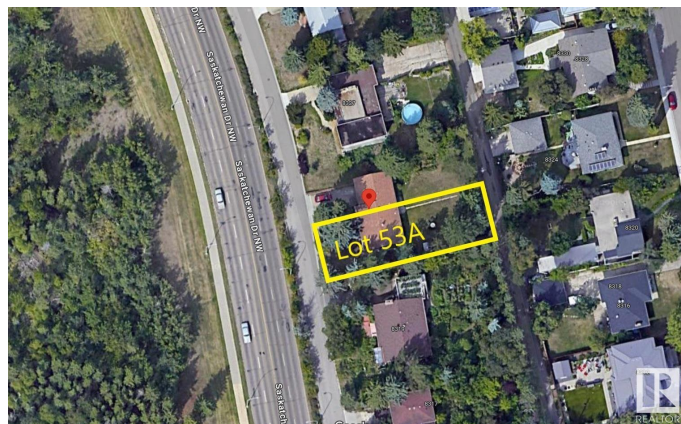
MLS® #E4416788

**\$825,000**

0 Bedroom, 0.00 Bathroom,  
Single Family on 0.00 Acres

Windsor Park (Edmonton), Edmonton, AB

Fantastic RIVER VALLEY VIEW! Outstanding building site in the desired community of Windsor Park. This 50â€™™x142â€™™ lot with full services, flat and ready for development. It is located just off the prestigious Saskatchewan Drive. Multiple Options for development â€“ The 50â€™™ frontage allow subdividing for two homes or building your luxury dream home with 3rd-floor rooftop patio overlooking the Saskatchewan River. Steps away from the University of Alberta, University Hospital & Edmonton's River Valley.



## Essential Information

|           |                 |
|-----------|-----------------|
| MLS® #    | E4416788        |
| Price     | \$825,000       |
| Bathrooms | 0.00            |
| Acres     | 0.00            |
| Type      | Single Family   |
| Sub-Type  | Vacant Lot/Land |
| Status    | Active          |

## Community Information

|             |                         |
|-------------|-------------------------|
| Address     | 8323 Saskatchewan Drive |
| Area        | Edmonton                |
| Subdivision | Windsor Park (Edmonton) |
| City        | Edmonton                |
| County      | ALBERTA                 |

Province AB  
Postal Code T6G 2A7

### Exterior

Exterior Features Fenced

### Additional Information

Date Listed January 1st, 2025

Days on Market 94

Zoning Zone 15

DATA IS DEEMED RELIABLE BUT IS NOT GUARANTEED ACCURATE BY THE REALTORS® ASSOCIATION OF EDMONTON. COPYRIGHT 2025 BY THE REALTORS® ASSOCIATION OF EDMONTON. ALL RIGHTS RESERVED. Trademarks are owned or controlled by the Canadian Real Estate Association (CREA) and identify real estate professionals who are members of CREA (REALTOR®, REALTORS®) and/or the quality of services they provide (MLS®, Multiple Listing Service®)

Listing information last updated on April 5th, 2025 at 4:17pm MDT