

\$135,000 - 8230 83 Ave Avenue, Edmonton

MLS® #E4418600

\$135,000

0 Bedroom, 0.00 Bathroom,
Business on 0.00 Acres

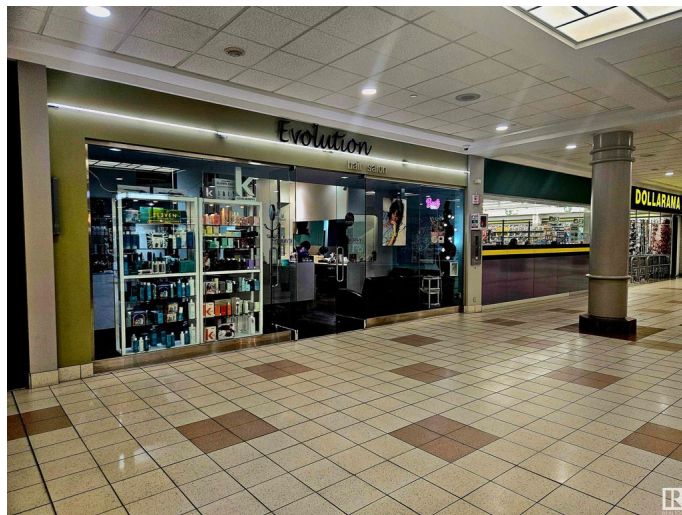
Bonnie Doon, Edmonton, AB

Unique Opportunity: Turnkey Hair Salon for Sale Take the reins of a fully operational hair salon in a prime central location, thriving for over 30 years with a loyal clientele. This beautifully designed salon boasts high foot and car traffic, surrounded by established businesses and ample free parking. Key Features: Turnkey Operation: Proven success with 4,000 annual appointments and strong walk-in traffic. Stylish Space: 10 styling chairs, 3 dryers, 6 wash stations, and a dedicated aesthetics room. Skilled Staff: Trained professionals eager to stay on for a smooth transition. Retail Potential: Well-known brand products account for 30% of sales. Supportive Landlords: Flexible arrangements for the new owner. Included in the sale are all furniture, fixtures, inventory, and a new POS system. The current owner is committed to comprehensive training. Thereâ€™s also potential for shared ownership. Donâ€™t miss this chance to excel in the beauty industry!

Built in 1958

Essential Information

MLS® #	E4418600
Price	\$135,000
Bathrooms	0.00
Acres	0.00



Year Built	1958
Type	Business
Status	Active

Community Information

Address	8230 83 Ave Avenue
Area	Edmonton
Subdivision	Bonnie Doon
City	Edmonton
County	ALBERTA
Province	AB
Postal Code	T6C 4E3

Exterior

Exterior	Concrete
Construction	Concrete

Additional Information

Date Listed	January 20th, 2025
Days on Market	75
Zoning	Zone 18

DATA IS DEEMED RELIABLE BUT IS NOT GUARANTEED ACCURATE BY THE REALTORS® ASSOCIATION OF EDMONTON. COPYRIGHT 2025 BY THE REALTORS® ASSOCIATION OF EDMONTON. ALL RIGHTS RESERVED. Trademarks are owned or controlled by the Canadian Real Estate Association (CREA) and identify real estate professionals who are members of CREA (REALTOR®, REALTORS®) and/or the quality of services they provide (MLS®, Multiple Listing Service®)

Listing information last updated on April 5th, 2025 at 3:17pm MDT