

\$725,000 - 8532 16a Avenue, Edmonton

MLS® #E4423254

\$725,000

4 Bedroom, 3.50 Bathroom, 2,121 sqft
Single Family on 0.00 Acres

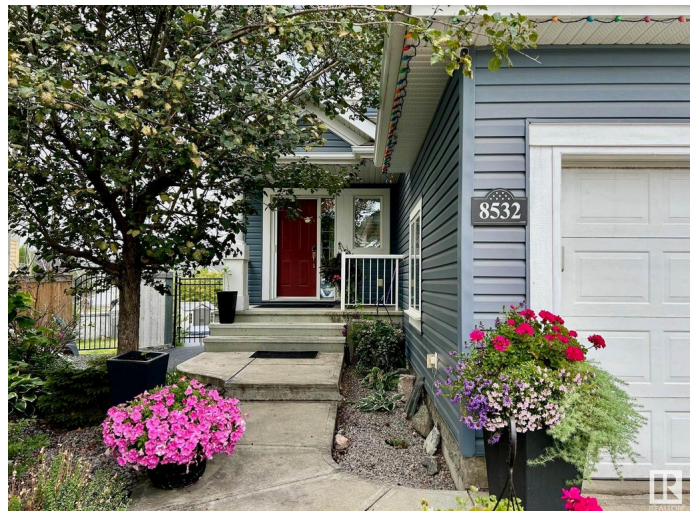
Summerside, Edmonton, AB

Experience tranquil living in this originally owned and beautifully maintained 2-storey WALKOUT in the highly sought-after community of SUMMERSIDE! This home offers an open, functional layout with large windows and skylights providing ample natural light. The beautiful white chef's kitchen offers s/s appliances, a large granite island with seating and a walk-through pantry with custom cabinetry. The spacious dining and living area overlooks the landscaped yard and beautiful greenspace. Upstairs boasts a huge, vaulted ceiling bonus room, 2 additional bedrooms, plus master suite. The master suite includes a walk in closet & 5pc ensuite, including a large, jetted tub. The finished, WALK-OUT basement offers a sizable bedroom as well as a full 4pc bathroom, large rec space that opens up to the stunning, large outdoor SCREENROOM. A must see. The beach gate is a short 250m distance, as well as a K-9 school <300m from your backyard.

Built in 2008

Essential Information

| | |
|-----------|-----------|
| MLS® # | E4423254 |
| Price | \$725,000 |
| Bedrooms | 4 |
| Bathrooms | 3.50 |



| | |
|----------------|------------------------|
| Full Baths | 3 |
| Half Baths | 1 |
| Square Footage | 2,121 |
| Acres | 0.00 |
| Year Built | 2008 |
| Type | Single Family |
| Sub-Type | Detached Single Family |
| Style | 2 Storey |
| Status | Active |

Community Information

| | |
|-------------|-----------------|
| Address | 8532 16a Avenue |
| Area | Edmonton |
| Subdivision | Summerside |
| City | Edmonton |
| County | ALBERTA |
| Province | AB |
| Postal Code | T6X 0H9 |

Amenities

| | |
|-----------|--|
| Amenities | Air Conditioner, Carbon Monoxide Detectors, Ceiling 10 ft., Deck, Detectors Smoke, Hot Water Natural Gas, Lake Privileges, No Smoking Home, Patio, Smart/Program. Thermostat, Skylight, Sunroom, Vaulted Ceiling, Walkout Basement |
| Parking | Double Garage Attached |

Interior

| | |
|-------------------|--|
| Interior Features | ensuite bathroom |
| Appliances | Air Conditioning-Central, Dishwasher-Built-In, Dryer, Garburator, Microwave Hood Fan, Oven-Microwave, Refrigerator, Storage Shed, Stove-Electric, Vacuum Systems, Washer, Window Coverings |
| Heating | Forced Air-1, Natural Gas |
| Fireplace | Yes |
| Fireplaces | Tile Surround |
| Stories | 3 |
| Has Basement | Yes |
| Basement | Full, Finished |

Exterior

| | |
|----------|-------------|
| Exterior | Wood, Vinyl |
|----------|-------------|

| | |
|-------------------|---|
| Exterior Features | Airport Nearby, Backs Onto Park/Trees, Beach Access, Cul-De-Sac, Fenced, Lake Access Property, Landscaped, No Through Road, Playground Nearby, Private Fishing, Public Transportation, Schools, Shopping Nearby, View Downtown, View Lake |
| Roof | Asphalt Shingles |
| Construction | Wood, Vinyl |
| Foundation | Concrete Perimeter |

Additional Information

| | |
|----------------|---------------------|
| Date Listed | February 28th, 2025 |
| Days on Market | 36 |
| Zoning | Zone 53 |
| HOA Fees | 443.71 |
| HOA Fees Freq. | Annually |

DATA IS DEEMED RELIABLE BUT IS NOT GUARANTEED ACCURATE BY THE REALTORS® ASSOCIATION OF EDMONTON. COPYRIGHT 2025 BY THE REALTORS® ASSOCIATION OF EDMONTON. ALL RIGHTS RESERVED. Trademarks are owned or controlled by the Canadian Real Estate Association (CREA) and identify real estate professionals who are members of CREA (REALTOR®, REALTORS®) and/or the quality of services they provide (MLS®, Multiple Listing Service®)

Listing information last updated on April 5th, 2025 at 2:32am MDT