

# \$589,000 - 3363 25 Avenue, Edmonton

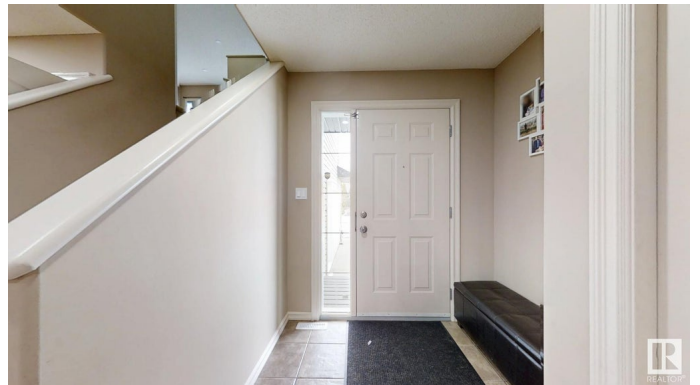
MLS® #E4425571

**\$589,000**

4 Bedroom, 3.50 Bathroom, 1,850 sqft  
Single Family on 0.00 Acres

Silver Berry, Edmonton, AB

**\*\*FINISHED BASEMENT WITH SECOND KITCHEN\*\*** Welcome to your dream home in Silver Berry, a vibrant and picturesque community in South Edmonton! This stunning 2 Story home features an open concept kitchen with plenty of cabinet space and stainless steel appliances on Main Floor , Living Room boasts oversized windows allowing ample sunlight ,2 pc Washroom, Dining area and Laundry .Upper Level includes Huge Bonus Room providing great space for relaxation and entertainment. The master bedroom comes with a 4PC ensuite ,walk in closet, Two more well-sized bedrooms and another Full washroom completes the upper level. Fully finished basement has a second kitchen, along with Family room, One Bedroom and full washroom with SEPERATE ENTRANCE through Garage. Central air conditioning, Central Vacuum, Huge deck and attractive landscaping. This home offers both comfort and functionality.



Built in 2004

## Essential Information

|           |           |
|-----------|-----------|
| MLS® #    | E4425571  |
| Price     | \$589,000 |
| Bedrooms  | 4         |
| Bathrooms | 3.50      |

|                |                        |
|----------------|------------------------|
| Full Baths     | 3                      |
| Half Baths     | 1                      |
| Square Footage | 1,850                  |
| Acres          | 0.00                   |
| Year Built     | 2004                   |
| Type           | Single Family          |
| Sub-Type       | Detached Single Family |
| Style          | 2 Storey               |
| Status         | Active                 |

### **Community Information**

|             |                |
|-------------|----------------|
| Address     | 3363 25 Avenue |
| Area        | Edmonton       |
| Subdivision | Silver Berry   |
| City        | Edmonton       |
| County      | ALBERTA        |
| Province    | AB             |
| Postal Code | T6T 1Y4        |

### **Amenities**

|                |  |
|----------------|--|
| Amenities      | Air Conditioner, Deck, No Animal Home, No Smoking Home |
| Parking Spaces | 4  |
| Parking        | Double Garage Attached                                 |

### **Interior**

|                   |  |
|-------------------|--|
| Interior Features | ensuite bathroom   |
| Appliances        | Air Conditioning-Central, Dishwasher-Built-In, Dryer, Garage Opener, Storage Shed, Vacuum System Attachments, Washer, Refrigerators-Two, Stoves-Two, Curtains and Blinds |
| Heating           | Forced Air-1, Natural Gas  |
| Stories           | 3  |
| Has Basement      | Yes  |
| Basement          | Full, Finished   |

### **Exterior**

|                   |                  |
|-------------------|------------------|
| Exterior          | Wood, Vinyl      |
| Exterior Features | Landscaped       |
| Roof              | Asphalt Shingles |
| Construction      | Wood, Vinyl      |

Foundation            Concrete Perimeter

### **School Information**

Elementary            Bisset School  
Middle                Rosslyn School  
High                    W P Wagner School

### **Additional Information**

Date Listed            March 13th, 2025  
Days on Market      23  
Zoning                 Zone 30

DATA IS DEEMED RELIABLE BUT IS NOT GUARANTEED ACCURATE BY THE REALTORS® ASSOCIATION OF EDMONTON. COPYRIGHT 2025 BY THE REALTORS® ASSOCIATION OF EDMONTON. ALL RIGHTS RESERVED. Trademarks are owned or controlled by the Canadian Real Estate Association (CREA) and identify real estate professionals who are members of CREA (REALTOR®, REALTORS®) and/or the quality of services they provide (MLS®, Multiple Listing Service®)

Listing information last updated on April 5th, 2025 at 1:47pm MDT