

\$599,900 - 8516 6 Avenue, Edmonton

MLS® #E4427513

\$599,900

4 Bedroom, 3.50 Bathroom, 2,079 sqft
Single Family on 0.00 Acres

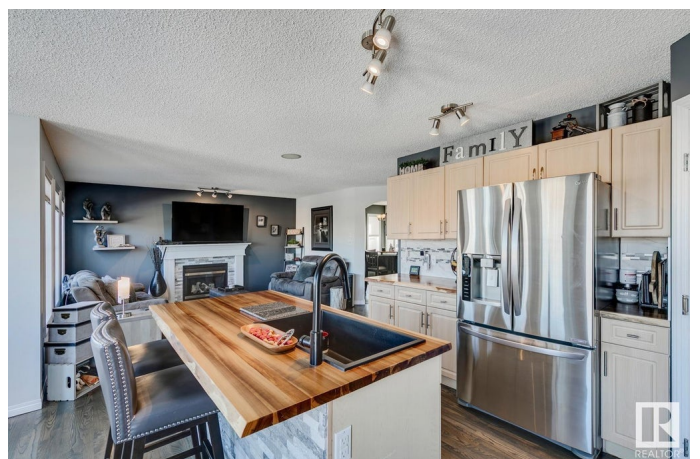
Ellerslie, Edmonton, AB

Absolutely gorgeous home in desirable Ellerslie! This nicely updated 2-storey offers over 2800 sqft of total living space and sits upon a beautiful lot backing directly onto a pond/park. The main floor welcomes you with a bright and spacious floorplan, gleaming refinished hardwood flooring, beautiful kitchen w/butcher block counters and new s.s. appliances, open living area w/tile surround gas fireplace, and great dining space w/tiled flooring. The upper level features the primary suite w/4-pc ensuite, walk-in closet, and raised nook area. Additional 2 bedrooms, 4-pc bath, and large bonus room w/vaulted ceilings. The FULLY FINISHED lower level features a large rec area, 4th bedroom, 3-pc bath, and loads of storage space. Outside you will enjoy beautiful views of the pond/park, composite deck, and firepit area. Recent improvements include: roof, flooring, furnace, HWT, paint, and more. Close to great schools, shopping, and other amenities. This is a fantastic family home in an even better location!

Built in 2003

Essential Information

MLS® #	E4427513
Price	\$599,900
Bedrooms	4



Bathrooms	3.50
Full Baths	3
Half Baths	1
Square Footage	2,079
Acres	0.00
Year Built	2003
Type	Single Family
Sub-Type	Detached Single Family
Style	2 Storey
Status	Active

Community Information

Address	8516 6 Avenue
Area	Edmonton
Subdivision	Ellerslie
City	Edmonton
County	ALBERTA
Province	AB
Postal Code	T6X 1J1

Amenities

Amenities	Deck, No Smoking Home, Vaulted Ceiling
Parking	Double Garage Attached

Interior

Interior Features	ensuite bathroom
Appliances	Dishwasher-Built-In, Garage Opener, Hood Fan, Oven-Microwave, Refrigerator, Stove-Gas, Vacuum System Attachments, Vacuum Systems, Window Coverings
Heating	Forced Air-1, Natural Gas
Fireplace	Yes
Fireplaces	Mantel, Tile Surround
Stories	3
Has Basement	Yes
Basement	Full, Finished

Exterior

Exterior	Wood, Vinyl
Exterior Features	Airport Nearby, Backs Onto Lake, Fenced, Flat Site, Golf Nearby,

Landscaped, Playground Nearby, Public Transportation, Schools, Shopping Nearby

Roof Asphalt Shingles
Construction Wood, Vinyl
Foundation Concrete Perimeter

School Information

Elementary Sakaw
Middle Kisewatsiwin
High J Percy Page

Additional Information

Date Listed March 25th, 2025
Days on Market 11
Zoning Zone 53

DATA IS DEEMED RELIABLE BUT IS NOT GUARANTEED ACCURATE BY THE REALTORS® ASSOCIATION OF EDMONTON. COPYRIGHT 2025 BY THE REALTORS® ASSOCIATION OF EDMONTON. ALL RIGHTS RESERVED. Trademarks are owned or controlled by the Canadian Real Estate Association (CREA) and identify real estate professionals who are members of CREA (REALTOR®, REALTORS®) and/or the quality of services they provide (MLS®, Multiple Listing Service®)

Listing information last updated on April 5th, 2025 at 2:17am MDT