

Courtesy Of Viktoriya V Finkbeiner Of Century 21 Leading

## **\$519,900 - 104 Woodside Crescent, Spruce Grove**

MLS® #E4429030

**\$519,900**

5 Bedroom, 3.00 Bathroom, 1,496 sqft  
Single Family on 0.00 Acres

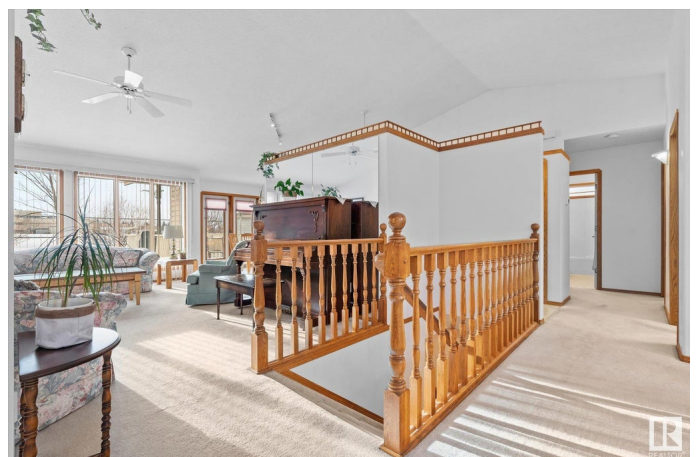
Woodside\_SPGR, Spruce Grove, AB

IMMACULATE spacious bungalow, showing pride of ownership, located in a well thought out neighborhood of Woodside, which is just a no through traffic circle with a playground & walking distance to a number of schools - making it an amazing place to raise a family or retire! The home offers an ABUNDANCE of NATURAL light from large west facing windows! Formal dining area at the front (or can be a great flex space), living room with gas fireplace & west facing light coming in, open to eat in kitchen & french door to outdoor space. Main floor laundry is in the mud room on your way to the finished garage. Primary bedroom is spacious & offers with his & hers closets & bright ensuite! 2nd bedroom & main bath complete the main floor. Fully finished basement offers 3 more bedrooms & generous family area with small wet bar & utility room with plenty of storage! Enjoy beautiful sunsets in your fenced back yard with inground sprinklers! Roof 2017, 2 sump pumps 2019, HWT 2019, Furnace 2021, AC 2022, Most Windows 2022!

Built in 1992

### **Essential Information**

MLS® #	E4429030
Price	\$519,900



Bedrooms	5
Bathrooms	3.00
Full Baths	3
Square Footage	1,496
Acres	0.00
Year Built	1992
Type	Single Family
Sub-Type	Detached Single Family
Style	Bungalow
Status	Active

### **Community Information**

Address	104 Woodside Crescent
Area	Spruce Grove
Subdivision	Woodside_SPGR
City	Spruce Grove
County	ALBERTA
Province	AB
Postal Code	T7X 3E4

### **Amenities**

Amenities	Air Conditioner, Closet Organizers, Deck, Fire Pit, No Animal Home, No Smoking Home, Vaulted Ceiling, Wood Windows
Parking Spaces	4
Parking	Double Garage Attached

### **Interior**

Interior Features	ensuite bathroom
Appliances	Air Conditioning-Central, Dishwasher-Built-In, Dryer, Garage Control, Garage Opener, Microwave Hood Fan, Refrigerator, Stove-Electric, Washer, Window Coverings
Heating	Forced Air-1, Natural Gas
Fireplaces	Mantel
Stories	2
Has Basement	Yes
Basement	Full, Finished

### **Exterior**

Exterior	Wood, Brick, Vinyl
----------	--------------------

Exterior Features	Backs Onto Park/Trees, Fenced, Landscaped, Playground Nearby, Public Transportation, Schools, Shopping Nearby
Roof	Asphalt Shingles
Construction	Wood, Brick, Vinyl
Foundation	Concrete Perimeter

### **School Information**

Elementary	Brookwood
Middle	Woodhaven
High	Spruce Grove Comp

### **Additional Information**

Date Listed	April 3rd, 2025
Days on Market	4
Zoning	Zone 91

DATA IS DEEMED RELIABLE BUT IS NOT GUARANTEED ACCURATE BY THE REALTORS® ASSOCIATION OF EDMONTON. COPYRIGHT 2025 BY THE REALTORS® ASSOCIATION OF EDMONTON. ALL RIGHTS RESERVED. Trademarks are owned or controlled by the Canadian Real Estate Association (CREA) and identify real estate professionals who are members of CREA (REALTOR®, REALTORS®) and/or the quality of services they provide (MLS®, Multiple Listing Service®)

Listing information last updated on April 7th, 2025 at 10:32am MDT