

## \$489,900 - 1113 Westerra Way, Stony Plain

MLS® #E4429238

**\$489,900**

4 Bedroom, 3.50 Bathroom, 1,793 sqft

Single Family on 0.00 Acres

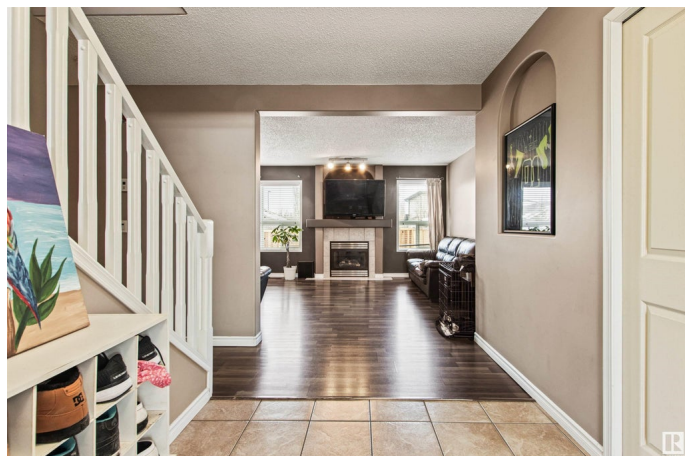
Westerra, Stony Plain, AB

Welcome to Westerra – A Wonderful Family Community! Nestled in the heart of a vibrant, family-friendly neighbourhood, this beautifully maintained 3+1 bedroom home offers the perfect setting to raise a family. Step into a bright and inviting kitchen with Maple cabinets and a charming dining area accented by a stylish mosaic tile design. The cozy living room boasts a gas fireplace, creating a warm and welcoming atmosphere. Upstairs, a spacious bonus room with vaulted ceilings provides the perfect retreat for relaxation. The primary bedroom includes a his/her closets, 4-piece ensuite, two additional bedrooms. Main floor laundry with front-load washer and dryer adds convenience. The fully finished basement offers extra living space with an additional bedroom, bathroom, and a flex room, ideal for a home office, gym, or playroom. Outside, enjoy a fully fenced yard, perfect for kids and pets. Located close to schools, playgrounds, and a golf course.

Built in 2005

### Essential Information

MLS® #	E4429238
Price	\$489,900
Bedrooms	4
Bathrooms	3.50



Full Baths	3
Half Baths	1
Square Footage	1,793
Acres	0.00
Year Built	2005
Type	Single Family
Sub-Type	Detached Single Family
Style	2 Storey
Status	Active

### Community Information

Address	1113 Westerra Way
Area	Stony Plain
Subdivision	Westerra
City	Stony Plain
County	ALBERTA
Province	AB
Postal Code	T7Z 2Y9

### Amenities

Amenities	Air Conditioner, Deck, No Smoking Home
Parking	Double Garage Attached

### Interior

Interior Features	ensuite bathroom
Appliances	Air Conditioning-Central, Dishwasher-Built-In, Dryer, Garage Opener, Oven-Microwave, Refrigerator, Stove-Electric, Washer
Heating	Forced Air-1, Natural Gas
Fireplace	Yes
Fireplaces	Mantel
Stories	3
Has Basement	Yes
Basement	Full, Finished

### Exterior

Exterior	Wood, Vinyl
Exterior Features	Fenced, Golf Nearby, Landscaped, Playground Nearby, Schools
Roof	Asphalt Shingles
Construction	Wood, Vinyl

Foundation                      Concrete Perimeter

**Additional Information**

Date Listed                      April 4th, 2025

Days on Market                13

Zoning                              Zone 91

DATA IS DEEMED RELIABLE BUT IS NOT GUARANTEED ACCURATE BY THE REALTORS® ASSOCIATION OF EDMONTON. COPYRIGHT 2025 BY THE REALTORS® ASSOCIATION OF EDMONTON. ALL RIGHTS RESERVED.Trademarks are owned or controlled by the Canadian Real Estate Association (CREA) and identify real estate professionals who are members of CREA (REALTOR®, REALTORS®) and/or the quality of services they provide (MLS®, Multiple Listing Service®)

Listing information last updated on April 17th, 2025 at 3:47am MDT