

\$795,000 - N/A, Edmonton

MLS® #E4429363

\$795,000

4 Bedroom, 3.00 Bathroom, 2,497 sqft
Single Family on 0.00 Acres

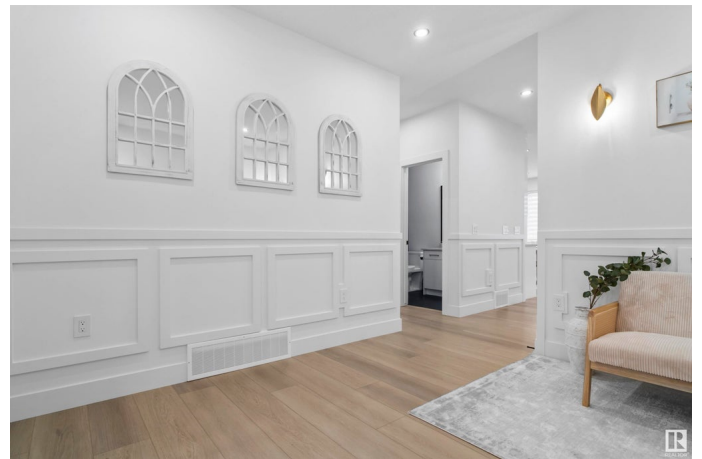
Keswick Area, Edmonton, AB

In the demanding community of Riverstead at Keswick! This 2500 square foot home backs onto a walking trail. This house has an enlarged elegant kitchen, a spice kitchen, and an open to below layout. Several EXTRA windows in spaces including the master bedroom, great room, nook area, spice kitchen, and front entrance. Large vanities in the communal bathrooms and a makeup vanity are provided in the ensuite. You are provided a prayer Niche with LEDs in the bonus area. This house has more than fifty pot lights, which will provide you with a great deal of brightness at night and plenty of natural light in the morning thanks to the additional windows placed throughout. Don't pass up the chance to purchase this house in the gorgeous neighborhood of RIVERSTEAD AT KESWICK.

Built in 2025

Essential Information

MLS® #	E4429363
Price	\$795,000
Bedrooms	4
Bathrooms	3.00
Full Baths	3
Square Footage	2,497
Acres	0.00
Year Built	2025



Type	Single Family
Sub-Type	Detached Single Family
Style	2 Storey
Status	Active

Community Information

Address	N/A
Area	Edmonton
Subdivision	Keswick Area
City	Edmonton
County	ALBERTA
Province	AB
Postal Code	T6W 5R2

Amenities

Amenities	Detectors Smoke, No Animal Home, No Smoking Home, See Remarks, HRV System
Parking	Double Garage Attached

Interior

Interior Features	ensuite bathroom
Appliances	Builder Appliance Credit
Heating	Forced Air-1, Natural Gas
Stories	2
Has Basement	Yes
Basement	Full, Unfinished

Exterior

Exterior	Wood, Vinyl
Exterior Features	Back Lane, Playground Nearby, Public Transportation, Schools, See Remarks, Partially Fenced
Roof	Asphalt Shingles
Construction	Wood, Vinyl
Foundation	Concrete Perimeter

Additional Information

Date Listed	April 5th, 2025
Days on Market	2
Zoning	Zone 56

DATA IS DEEMED RELIABLE BUT IS NOT GUARANTEED ACCURATE BY THE REALTORS® ASSOCIATION OF EDMONTON. COPYRIGHT 2025 BY THE REALTORS® ASSOCIATION OF EDMONTON. ALL RIGHTS RESERVED. Trademarks are owned or controlled by the Canadian Real Estate Association (CREA) and identify real estate professionals who are members of CREA (REALTOR®, REALTORS®) and/or the quality of services they provide (MLS®, Multiple Listing Service®)

Listing information last updated on April 7th, 2025 at 9:47am MDT