

# \$535,000 - 20 Walters Place, Leduc

MLS® #E4429773

## \$535,000

4 Bedroom, 3.00 Bathroom, 1,263 sqft  
Single Family on 0.00 Acres

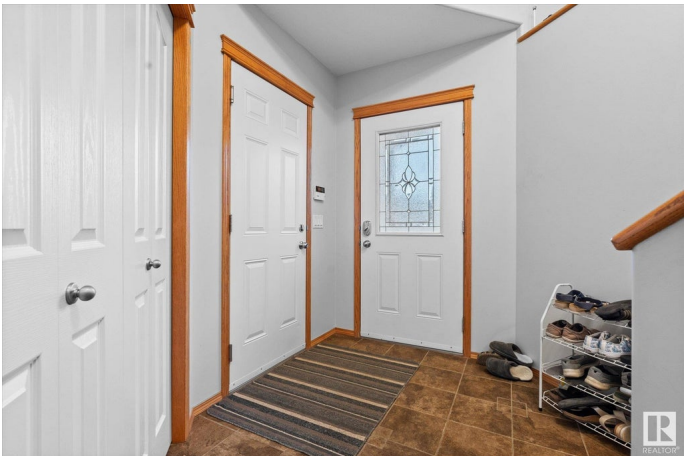
Windrose, Leduc, AB

Designed with comfort and style in mind, this expansive 2005 bi-level is the perfect retreat for a growing family. Offering 4 spacious bedrooms (2 up, 2 down) and 3 full baths, itâ€™s crafted for both function and ease of living. Recent upgrades include a brand new furnace and hot water tank (2024), plus central A/C (2021) for year-round comfort. The bright U-shaped kitchen features a massive pantry and a sunlit dining area with access to a west-facing deckâ€™ideal for summer barbecues. The main floor living room with gas fireplace invites cozy gatherings, while the fully finished lower level boasts a generous rec room with a second fireplace. A 23x28 heated garage provides endless space for projects or storage. The fully fenced yard adds privacy and space to roam. Ideally located near schools, shopping, trails, and the golf course with quick access to Hwy 2 and the airportâ€™lifestyle and location await!

Built in 2005

## Essential Information

|            |           |
|------------|-----------|
| MLS® #     | E4429773  |
| Price      | \$535,000 |
| Bedrooms   | 4         |
| Bathrooms  | 3.00      |
| Full Baths | 3         |



|                |                        |
|----------------|------------------------|
| Square Footage | 1,263                  |
| Acres          | 0.00                   |
| Year Built     | 2005                   |
| Type           | Single Family          |
| Sub-Type       | Detached Single Family |
| Style          | Bi-Level               |
| Status         | Active                 |

### **Community Information**

|             |                  |
|-------------|------------------|
| Address     | 20 Walters Place |
| Area        | Leduc            |
| Subdivision | Windrose         |
| City        | Leduc            |
| County      | ALBERTA          |
| Province    | AB               |
| Postal Code | T9E 8S7          |

### **Amenities**

|           |                                                       |
|-----------|-------------------------------------------------------|
| Amenities | Air Conditioner, Deck, No Smoking Home                |
| Parking   | Double Garage Attached, Heated, Insulated, Over Sized |

### **Interior**

|                   |                                                                                                                                               |
|-------------------|-----------------------------------------------------------------------------------------------------------------------------------------------|
| Interior Features | ensuite bathroom                                                                                                                              |
| Appliances        | Air Conditioning-Central, Dishwasher-Built-In, Dryer, Garage Control, Garage Opener, Microwave Hood Fan, Refrigerator, Stove-Electric, Washer |
| Heating           | Forced Air-1, Natural Gas                                                                                                                     |
| Fireplace         | Yes                                                                                                                                           |
| Fireplaces        | Corner                                                                                                                                        |
| Stories           | 2                                                                                                                                             |
| Has Basement      | Yes                                                                                                                                           |
| Basement          | Full, Finished                                                                                                                                |

### **Exterior**

|                   |                                                                                |
|-------------------|--------------------------------------------------------------------------------|
| Exterior          | Wood, Brick, Vinyl                                                             |
| Exterior Features | Airport Nearby, Fenced, Flat Site, Playground Nearby, Schools, Shopping Nearby |
| Roof              | Asphalt Shingles                                                               |
| Construction      | Wood, Brick, Vinyl                                                             |

Foundation                      Concrete Perimeter

**Additional Information**

Date Listed                      April 9th, 2025

Days on Market                13

Zoning                            Zone 81

DATA IS DEEMED RELIABLE BUT IS NOT GUARANTEED ACCURATE BY THE REALTORS® ASSOCIATION OF EDMONTON. COPYRIGHT 2025 BY THE REALTORS® ASSOCIATION OF EDMONTON. ALL RIGHTS RESERVED.Trademarks are owned or controlled by the Canadian Real Estate Association (CREA) and identify real estate professionals who are members of CREA (REALTOR®, REALTORS®) and/or the quality of services they provide (MLS®, Multiple Listing Service®)

Listing information last updated on April 22nd, 2025 at 5:17am MDT