

\$349,900 - 9216 91 Street, Edmonton

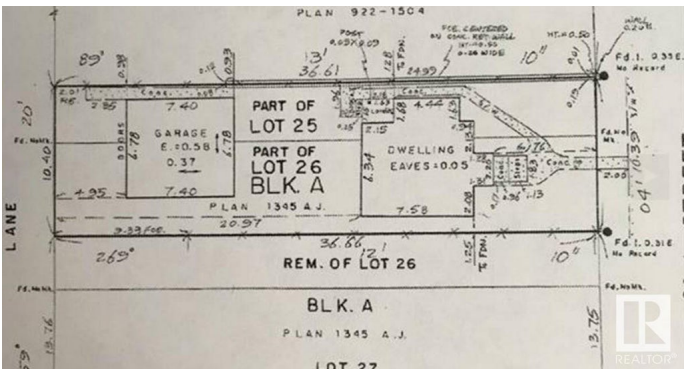
MLS® #E4430409

\$349,900

0 Bedroom, 0.00 Bathroom,
Single Family on 0.00 Acres

Bonnie Doon, Edmonton, AB

Rare East Facing Vacant lot in Bonnie Doon!!!
Incredible location to build your dream home
or duplex... just steps away from Bonnie Doon
Park and Mill Creek Ravine! Lot size is approx.
4000+ sq. ft. (33.3ft x 120ft). Walk to shops,
parks, restaurants, Campus Saint-Jean and
École Maurice-Lavallée (high school).
Close to downtown, playgrounds, golf and
more! Perfect location. This property offers an
exceptional opportunity to someone wanting a
new home in an ideal location!



Essential Information

MLS® #	E4430409
Price	\$349,900
Bathrooms	0.00
Acres	0.00
Type	Single Family
Sub-Type	Vacant Lot/Land
Status	Active

Community Information

Address	9216 91 Street
Area	Edmonton
Subdivision	Bonnie Doon
City	Edmonton
County	ALBERTA
Province	AB

Postal Code T6C 3N8

Exterior

Exterior Features Back Lane, Flat Site, Playground Nearby, Public Transportation,
 Schools, Shopping Nearby, See Remarks

Additional Information

Date Listed April 11th, 2025

Days on Market 11

Zoning Zone 18

DATA IS DEEMED RELIABLE BUT IS NOT GUARANTEED ACCURATE BY THE REALTORS® ASSOCIATION OF EDMONTON. COPYRIGHT 2025 BY THE REALTORS® ASSOCIATION OF EDMONTON. ALL RIGHTS RESERVED.Trademarks are owned or controlled by the Canadian Real Estate Association (CREA) and identify real estate professionals who are members of CREA (REALTOR®, REALTORS®) and/or the quality of services they provide (MLS®, Multiple Listing Service®)

Listing information last updated on April 22nd, 2025 at 9:31am MDT